



**Size:** to fit small dogs - **Skill Level:** intermediate

**How much yarn:** 2 balls (each ball 50g and 125m) (100% Extrafine Merino Wool) whose 1 balls shade no. 10095 red and 1 ball shade no. 10001 white

**Needles:** A 3.75mm knitting needles

**Sewing needle:** Yarn needle with rounded point

**Other items:** A stitch-holder. A metal ring

### STITCHES

**Using needles:** K2, P2 rib - STOCKING STITCH (ST ST): 1 row K (RS), 1 row P. FAIR ISLE PATTERN: work in st st, following Chart. Change colour as follows: knit the first colour, and when the pattern indicates, drop the yarn and pick up the second colour to knit it. Continue alternating yarns like this to the end of the row. Make sure the dominant colour is stranded over the top, and the contrast colour is worked from underneath. This stops the working yarns tangling and maintains a neat, even pattern to the work.

### TENSION

19 sts and 27 rows measure 10cm square over stocking st with 3.75 mm needles. Take time to check tension before starting work: it is essential to work to the stated tension to achieve success.

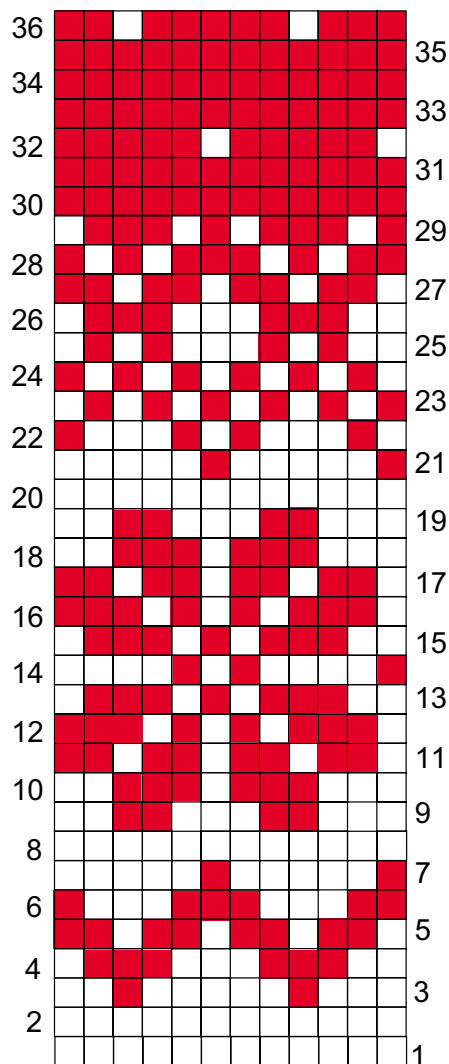
### INSTRUCTIONS

Work dog coat starting from neck. Using white yarn cast on 54 sts and work 26 rows in K2, P2 rib, then inc 8 sts evenly on next row. There are 62 sts on needle and work measures 9 cm from beg. Cont in Fair Isle stocking st, following Chart and working 1 selvedge st at each edge. At end of Chart cont to work in stocking st only with red yarn. AT THE SAME TIME when work measures 6cm from Fair Isle beg, leave last 13 sts on a stitch-holder and cont to work on rem 49 sts until work measures 18 cm from Fair Isle beg. To round upper part of the Back, cast off at each end on next and every alternate row: 3 sts once, 2 sts once, 1 st 8 times and 2 sts once, then cast off rem 19 sts. Now work the 13 sts from stitch-holder until piece measures 18cm from neck (i.e. the same height as the Back before the decreases) in order to have the girth, then cast off.

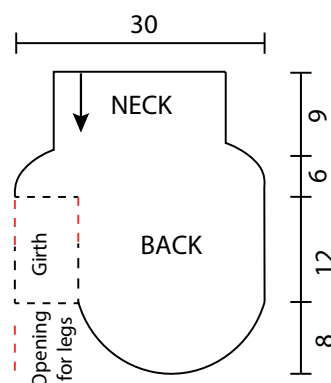
### FINISHING

For the first paw, with the red yarn pick up 13 sts along a girth side and a back side (= 26 sts), making sure that the closing seam matches the side that is still open. Work 8 rows in K2, P2 rib, then cast off. Sew the leg and girth side

### CHART



Each square corresponds to 1 st and 1 row



together with the back side still open. With the red yarn pick up 82 sts across the back and the girth to create finishing border and work 6 rows in K2, P2, then cast off. Work the second paw as the first paw, then complete the side seam, including border. Insert the ring between the stitches to attach the leash.

**Note:** wash item carefully at low temperature, with a very little fabric softener. Lay the item to dry on a flat surface, without ever hanging them.